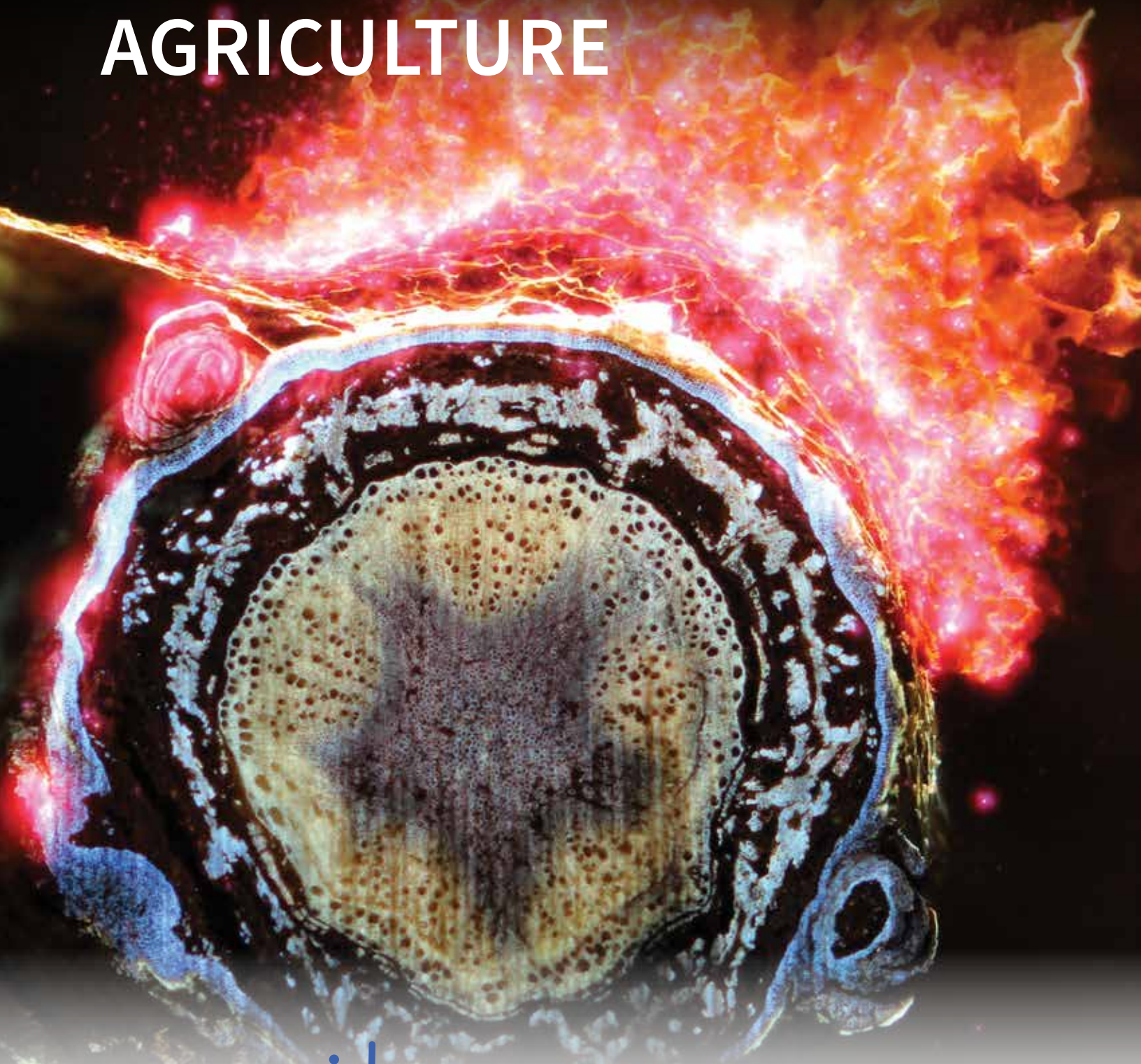


# PLANT BIOLOGY / AGRICULTURE



  
**LATSCAN**  
3D imaging technology





## Laser Ablation Tomography (LATscan™)

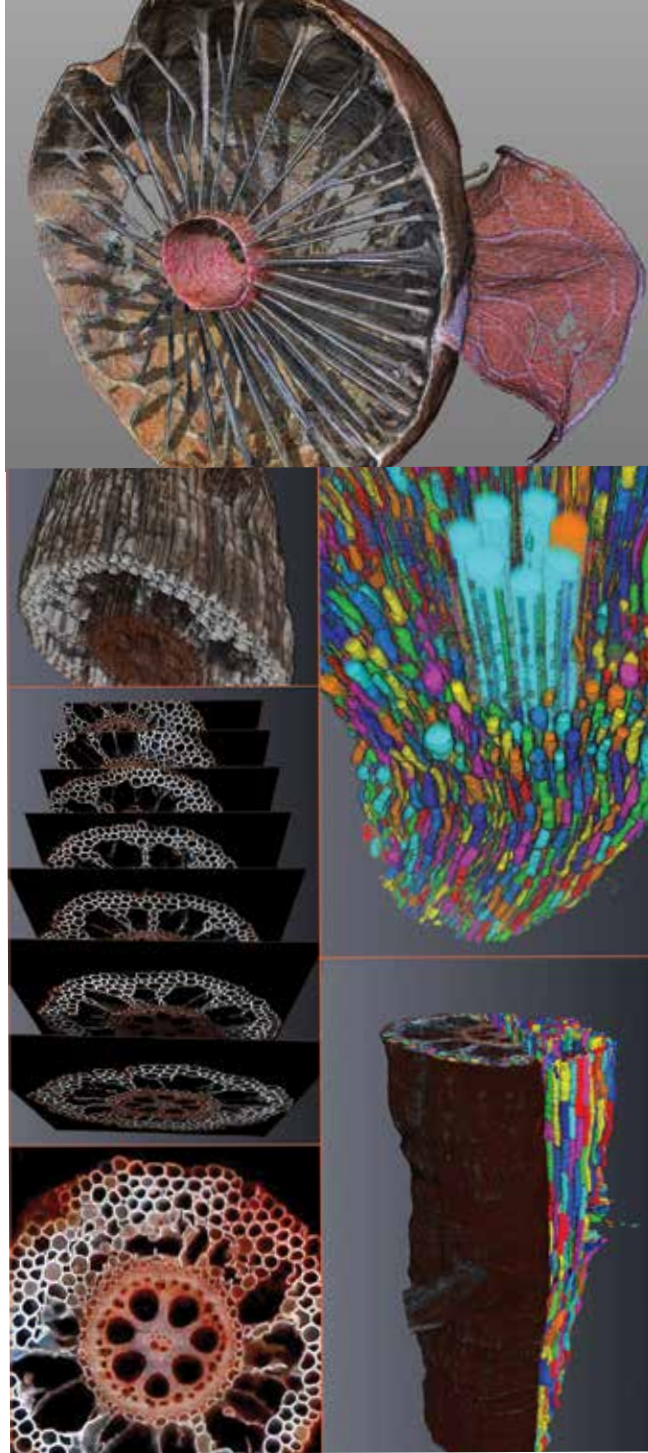
LATscan™ is a fundamentally new laser-based technology that offers truly game-changing performance in virtually all areas of plant biology. From unprecedented detail, full color volumetric data acquisition, fluorescent composition discrimination, to high-volume automation, data can be acquired with unrivaled speed and precision. LATscan promises to fundamentally improve the quality of your research, whether high-throughput phenotyping or just single sample exploration and discovery.

### Equipment Capabilities:

- High Throughput
- Sub-Micron Image Resolution
- Natural Color
- Structural Accuracy
- 3D Imaging
- Volumetric Analysis
- User-defined Segmentation
- Component quantification
- Data Export for Computational Modeling and Analysis
- And Much More

### Features

- Geometric and Micro Anatomic Structure Visualization
- Compositional Visualization
- Morphometric Analysis
- Spectral Fluorescent Imaging
- Tomographic Models & Animations
- Sub-Micron Resolution
- Wide Range of Scales: < 1 mm to 25 mm



**LATscan.com**

Email general inquiries to: [info@LATscan.com](mailto:info@LATscan.com)

**Accounting & Administration** - Josh Blosenski  
P: 833-560-9789 (ext 0)

**Technical Support** - Benjamin Hall  
P: 833-560-9789 (ext 1)

**Sales and Services** - Andrew Moir  
P: 833-560-9789 (ext 3) M: 814-571-9444  
E: [Andy@LATscan.com](mailto:Andy@LATscan.com)

LATscan, 3D Imaging Technology  
200 Innovation Blvd., Ste 261  
State College, PA 16803